



SaeboFlex®

SaeboGlove

SaeboVR

SaeboReJoyce

SaeboStim Micro



What is the SaeboStim Micro?

The **SaeboStim Micro** provides low-level sensory electrical stimulation to the arm and hand using a specialized Electro-Mesh Garment. The unique Electro-Mesh material is not only soft and comfortable to wear at rest, but also during activities. Clients suffering from impaired function, weakness and spasticity can benefit from the much-needed stimulation.

The Electro-Mesh Garments consist of a glove (hand stimulation) and arm sleeve (arm stimulation). The conductive material is made of silver treated nylon fibers blended with Dacron®. The stimulation is delivered into the Garments by a uniquely designed stimulator widely used in scientific studies.

Why use the SaeboStim Micro?

- Impaired function from a neurological injury such as stroke typically results in both sensory and motor deficits.
- Limited use of the upper limb can lead to impaired sensory communication to the brain (touch, feel, aware of joint movement).
- Providing low-level sensory stimulation (i.e., without producing a muscle contraction) to the hand and arm, can increase signals delivered to the brain leading to increased corticomotor excitability.
- This form of treatment primes the cortex which leads to improved sensory/motor recovery, function and cortical reorganization.

Benefits*:

- Decrease spasticity
- Improve motor function
- Increase sensation
- Improve inattention and neglect
- Increased cortical plasticity and motor excitability
- Decrease swelling and pain
- Normalize hand temperature

Clinical Indications:

- Limited arm and hand function
- Spasticity
- Arm and/or hand pain
- Arm and/or hand edema
- Decreased sensation
- Inattention or neglect

Code SBO-S2-KT-10 (Available in XS, S, M, L, XL)

*For a list of all related studies and abstracts, please visit www.saebo.com.

SaeboGlove



What is the SaeboGlove?

This cutting edge device helps clients suffering from neurological and orthopaedic injuries incorporate their hand functionally in therapy and at home. The lightweight, low-profile functional design is just one of the many innovative features that are offered with the **SaeboGlove**.

The proprietary tension system extends the fingers and thumb following grasping so clients can incorporate their affected limb functionally. This new found freedom leads to improved motor recovery and functional independence.

Features:

- Spiral forearm design that secures the wrist in a functional position.
- Tensioners are located at the IP joints (interphalangeal joint) of the fingers and thumb to assist with extending the digits following grasping.
- Individual Tensioners can be removed to customise assistance based on the client's needs.
- Numerous sized Tensioners included to accommodate various finger lengths.
- Full joint finger motion possible to maximise functional performance.
- Silicone covered finger tips to improve traction during grasping.
- Non-slip liner to minimise migration.
- Glove includes Lycra material for expandability.
- Palm exposed to increase breathability and ease of donning.
- Lightweight and comfortable.

Code	Left	Right
S, XS	SBO-G1-GL-SM-XS-L-1	SBO-G1-GL-SM-XS-R-1
S, S	SBO-G1-GL-SM-SM-L-1	SBO-G1-GL-SM-SM-R-1
M, XS	SBO-G1-GL-MD-XS-L-1	SBO-G1-GL-MD-XS-R-1
M, S	SBO-G1-GL-MD-SM-L-1	SBO-G1-GL-MD-SM-R-1
M, M	SBO-G1-GL-MD-MD-L-1	SBO-G1-GL-MD-MD-R-1
M, L	SBO-G1-GL-MD-LG-L-1	SBO-G1-GL-MD-LG-R-1
L, L	SBO-G1-GL-LG-LG-L-1	SBO-G1-GL-LG-LG-R-1
L, XL	SBO-G1-GL-LG-XL-L-1	SBO-G1-GL-LG-XL-R-1

A dynamic solution for a dynamic problem™

What is the SaeboStretch®?

The **SaeboStretch®** is a revolutionary dynamic hand splint for individuals suffering from neurological injuries such as stroke. The splint helps to prevent joint damage while improving and maintaining range of motion.

The **SaeboStretch®** has a dynamic hand piece that allows the fingers to move through flexion caused by postural changes, associated reactions and increased tone. It then gradually repositions the fingers into extension. It includes three different hand pieces that offer various grades of resistance.

Features:

- Patented stretch technology with three interchangeable energy-storing hand plates.
- Proprietary strapping system that utilises key anatomical points of control to maximise control and insure an intimate fit.
- Malleable wrist and thumb mount allows the therapist to further customise the fit.
- Comfortable non-slip cover and straps to keep fingers in the desired position.
- Straps sewn to cover to maximise proper positioning and ease of donning.
- Adjustable thumb system to allow for radial and palmar adduction/abduction.
- Special padding to help maintain the integrity of the palmar arch.
- Cover features a zipper closure which can easily be removed for cleaning.

Code	Left	Right
Small	SBO-S1SS10SML1	SBO-S1SS10SMR1
Medium	SBO-S1SS10MDL1	SBO-S1SS10MDR1
Large	SBO-S1SS10LGL1	SBO-S1SS10LGR1

Sizing

Small: 5.7cm – 7.0cm
Medium: 7.0cm – 8.2cm
Large: 8.2cm – 10.0cm

- Measure across the proximal phalanges of digits 2-5 just proximal to the PIP joints.
- Please make sure the fingers are in the adducted position.
- Do not wrap the tape down the lateral or medial side of the hand.
- Consider the length of the fingers when deciding between 2 different sizes. (i.e., shorter fingers = smaller size)



Indications:

The **SaeboStretch®** is appropriate for patients with minimum to moderate tone and soft tissue shortening.

Saebo Arm Training Program

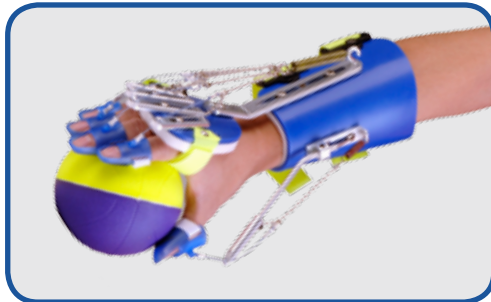
The Saebo Arm Training Program
featuring the *SaeboFlex*[®] and *SaeboReach*[®]
allows patients to begin using their arm and hand in therapy.

Benefits Include:

- Maintains the patient's involved arm and hand in a functional position.
- Offers a dynamic component that assists with thumb and finger extension so grasp and release tasks can be accomplished.
- Offers a dynamic elbow extension system to facilitate functional reaching.
- With the ability to perform grasp and release activities, patients can perform mass practice, task-oriented arm training.

The **Saebo Arm Training Program** includes instruction in custom fitting, assessment skills, developing treatment plans, and the effective use of the Saebo exercise equipment.

SaeboFlex[®]



The *SaeboFlex*[®] is a dynamic, custom fabricated wrist, hand, finger orthosis. The *SaeboFlex*[®] features a spring-loaded finger extension system. These springs provide resistance to the muscles that are used to grasp and assist in opening the hand and fingers for releasing.

Benefits include:

- Custom fabricated at Saebo and adjusted on-site by a Saebo Trained clinician for comfort and maximum effectiveness
- Supports the wrist, hand and fingers in a functional position
- Consists of multiple graded springs to accommodate varying degrees of tone in the hand
- Allows patients to incorporate their hand immediately for grasp and release activities which would otherwise be impossible
- Appropriate for patients with severe tone in the hand

Code SBO-X1FX1CUN1

SaeboReach[™]



The *SaeboReach*[™] is a dynamic, custom fabricated elbow, wrist, hand, finger orthosis. The *SaeboReach*[™] consists of a combination of the *SaeboFlex*[®] and a custom fabricated above elbow component. The orthosis features an elbow extension system to assist in straightening the elbow during functional reaching. The *SaeboReach*[™] was designed specifically for individuals that have limited arm and hand function.

Benefits include:

- Custom fabricated at Saebo and adjusted on-site by a Saebo Trained clinician for comfort and maximum effectiveness
- Supports the weakened elbow, wrist, hand and fingers
- Positions the wrist and fingers into a functional position
- Consists of multiple graded springs to accommodate varying degrees of tone in the hand
- Elbow extension system includes graded tension cords to accommodate varying degrees of tone in the elbow
- Allows patients to incorporate their hand immediately for grasp and release activities which would otherwise be impossible
- Appropriate for patients with severe tone in the elbow and hand

Code SBO-X1RE1CUN1

Evaluation & Treatment Kit

Saebo now offers a complete treatment program designed to allow patients to begin incorporating their hand functionally in the critical days and weeks immediately following their injury. Recent research indicates that clinically meaningful and long-lasting effects on motor function can be achieved when patients suffering from neurological injuries, such as stroke, receive repetitive arm training during the acute phase.

Program Benefits:

- Maximise the patient's functional recovery due to early initiation of treatment
- Enable patients to immediately incorporate their hand functionally for grasp and release activities
- Utilise a full range of task-specific, therapeutic exercise equipment which allows clinicians to customise treatment programs to address each patient's specific deficits
- Customises a fabricated orthosis for each patient to use in therapy and at home
- Reinforces patients' gains made in the clinic by easily incorporating the Saebo program at home
- Enable treatment of multiple patients simultaneously with a variety of sizes and parts
- Allow clinicians to maximise their treatment programs by using a full range of Saebo gross motor equipment
- Offer an affordable, highly effective treatment option to patients as they transition from inpatient rehab to outpatient rehab

Treatment Program

Saebo 5

SaeboFlex®

Qty	Item
(9)	Universal Forearm Shells (all sizes)
(10)	Left Hand Pieces (all sizes)
(10)	Right Hand Pieces (all sizes)
(5)	Sets of Aluminium
(5)	Sets of Finger Springs
(5)	Sets of Thumb Springs
(112)	Digit Caps
(105)	Replacement Liners
	Extra Misc. Parts

SaeboReach™

Qty	Item
(5)	Above Elbow Cuffs (all sizes)
(2)	Outrigger Systems
(3)	Elbow Stops
(2)	Sets of Tension Cords
(25)	Replacement Liners

SaeboStretch®

Qty	Item
(3)	Left SaeboStretch® (S-L)
(3)	Right SaeboStretch® (S-L)
▲	1 Four Tier
▲	1 Five Ball Peg Activity
▲	1 Height Adjustable Target
▲	1 Multi-purpose Exercise Device
▲	1 SaeboGlide® Plus
▲	48 Exercise Balls
▲	12 Paediatric Balls
▲	4 Crates

SBO-K1LG30SDN1

Saebo 5 Evaluation & Treatment Kit
(excludes GME products listed above)

SBO-K1LT40SDN1

Saebo 5 Evaluation & Treatment Kit
with Gross Motor Equipment

Saebo 10

SaeboFlex®

Qty	Item
(11)	Universal Forearm Shells (all sizes)
(12)	Left Hand Pieces (all sizes)
(12)	Right Hand Pieces (all sizes)
(10)	Sets of Aluminium
(10)	Sets of Finger Springs
(10)	Sets of Thumb Springs
(174)	Digit Caps
(36)	Replacement Forearm Straps
(14)	Replacement Hand Straps
(180)	Replacement Liners
	Extra Misc. Parts

SaeboReach™

Qty	Item
(5)	Above Elbow Cuffs (all sizes)
(2)	Outrigger Systems
(3)	Elbow Stops
(2)	Sets of Tension Cords
(25)	Replacement Liners

SaeboStretch®

Qty	Item
(3)	Left SaeboStretch® (S-L)
(3)	Right SaeboStretch® (S-L)
▲	1 Four Tier
▲	1 Five Ball Peg Activity
▲	1 Height Adjustable Target
▲	1 Multi-purpose Exercise Device
▲	1 SaeboGlide® Plus
▲	48 Exercise Balls
▲	12 Paediatric Balls
▲	4 Crates

SBO-K1IP35SDN1

Saebo 10 Evaluation & Treatment Kit
with Gross Motor Equipment



Gross Motor Equipment



Height Adjustable Target (H.A.T.)

This fully adjustable device can be used to target specific muscle groups for strengthening. It can also be used for combined movements designed to facilitate multiple degrees of freedom throughout the upper extremity. Therapists can manipulate this versatile piece of equipment to progressively challenge individuals at all levels of upper extremity recovery. It has a 7" ball at one end and a 12½" ring at the other end and can be used in combination with our other rehab equipment to further challenge individuals.

Code SBO-E1HA10SDN1



The Multi-Purpose Exercise Device

Two work stations in one. The Ring Tree activity focuses on proximal strengthening at the shoulder, while the Pronation-Supination activity works on distal mobility and strengthening of the forearm. The two activities facilitate upper extremity mobility on stability.

Code SBO-E1MP10SDN1



Four Tier Ball Activity

This great introductory piece of equipment is designed for individuals with little shoulder and elbow movement. It can be used as a unit or the tubes can be easily removed and used separately to facilitate progression and strengthening in all planes of movement. Depending on the positioning of the "target" tube, individuals can start to work in the synergy pattern, then slowly break away and exercise outside the synergy pattern as they improve.

Code SBO-E1FT10SDN1



The Five-Ball Peg Activity

Designed as a higher-level activity, it can be used when grip strength and proximal stability improve. The two bases can be positioned at different locations to facilitate trunk elongation and rotation, weight shift, and at different heights to facilitate weight bearing through the lower extremity. This piece of equipment is extremely challenging when used in combination with the Height Adjustable Target.

Code SBO-E1FB10SDN1



Adult



Paediatric

Saebo Exercise Balls

Used in conjunction with the Saebo orthosis for task specific arm training drills. Includes 12 balls per pack.

Code

SBO-E1EB10SDN12

Adult

SBO-E1EB20SDN12

Paediatric

SaeboGlide® / SaeboGlide® Plus

The **SaeboGlide®** (formerly Hemi-Glide) is a new revolutionary product specifically designed to exercise the affected arm. It is the only device currently on the market that will challenge the stroke survivor at all stages of recovery.

The **SaeboGlide®** offers a way to exercise the affected arm by using the gliding sleeve. Following placement of the hand onto the gliding sleeve, the distal support will allow the stroke survivor to perform various controlled upper extremity exercises at his or her appropriate strength level.

The SaeboGlide® does not include the hand strapping system. SaeboGlide Plus includes the hand strapping system. This product is for individuals who exhibit good gripping ability.

Benefits of using the SaeboGlide®

- Can exercise your involved arm in all planes of movement
- Can be used in lying, sitting, and standing position
- Individuals with poor hand function can use the SaeboGlide with the hand strap
- Challenges you throughout all stages of recovery
- Comes with an easy-to-read instruction manual with over 50 pictures of recommended exercises

Code **SaeboGlide®**

SBO-E1GL10SDN1

SBO-E1GL10PEN1

Adult

Paediatric

SaeboGlide® Plus

(includes hand strapping system)

SBO-E1GP10SDN1

SBO-E1GP10PEN1

Adult

Paediatric



SaeboGlide®



Paediatric SaeboGlide®



SaeboGlide® Plus



Paediatric SaeboGlide® Plus

SaeboMAS



The **SaeboMAS** dynamic mobile arm support system is a zero gravity upper extremity device specifically designed to facilitate and challenge the weakened shoulder and elbow during functional tasks and exercise drills.

Patients suffering from neurological and orthopaedic conditions and who exhibit proximal weakness can benefit from the much needed support and facilitation.

Additionally, patients with proximal weakness can now participate in proven treatment techniques of highly repetitive, task oriented activities which would have otherwise been impossible.

Features:

- Adjustable spring based parallelogram offering various levels of assistance.
- Incorporate all planes of movement so multi-directional can be achieved.
- Measurable graded Tension Scale for tracking and documenting progress.
- Height adjustable.
- Table Mount.
- Comfortable malleable forearm support with removable liners.
- Elbow Support attachment.
- Lightweight and portable.
- The **SaeboMAS** Base makes the MAS mobile for easy relocation throughout your facility.

SaeboMAS Base



(optional)

Benefits:

- Increase motor control, strength and ROM.
- Reduce hand-over-hand assistance, allowing the patient to take on a more active role.
- Minimise/prevent over-use injuries and unwanted movement. Improve ADL performance.
- Provide the clinician with an "extra pair of hands" to offer more effective facilitation when needed.
- Provide an opportunity for the patient to perform highly repetitive task-oriented drills.
- Safe and effective way to perform upper extremity tasks with patients presenting with shoulder subluxation.

Code SBO-K1-AS-10-SD-N-1 SaeboMas
SBO-K1-AS-20-SD-N-1 SaeboMas (inc. Base)
SBO-K1-AS-55-SD-N-1 SaeboMAS Base

SaeboMAS mini



The **SaeboMAS mini** is a lightweight, zero gravity, dynamic mobile arm support that challenges and assists the weakened shoulder and elbow during functional tasks. This compact device was specifically designed for clients suffering from neurological and orthopedic conditions resulting in shoulder and elbow weakness.

The **SaeboMAS mini** is the ideal home program solution to assist with improving strength, motor recovery, and independence. Clients will be able to perform functional exercises with greater ease and minimal compensation. Additionally, this personal device allows for enhanced independence for self-care, leisure or occupational tasks like using a computer, eating, drinking, or grooming.

The main feature of the **SaeboMAS mini** is the tension system. Based on the functional goals, the adjustable spring based parallelogram provides precise customization for assistance or resistance. Whether the client requires extra assistance for functional tasks or less assistance to further challenge his or her strength during exercise, the proprietary tension system is fully adjustable.

Features:

- Adjustable spring based parallelogram offering levels of assistance.
- Incorporates all planes of movement so multi-directional activities can be achieved.
- Height adjustable.
- Includes a portable table mount.
- Comfortable malleable forearm support with removable liners for cleaning.
- Lightweight and portable.



Benefits:

- Increases motor control, strength and ROM.
- Improves ADL performance.
- Minimizes/prevents over-use injuries and unwanted movement.
- Safe and effective way to treat shoulder subluxation

Code SBO-K1MM100SDN1 (inc. Table mount)

Saebo MyoTrac Infiniti

The **Saebo MyoTrac Infiniti** is a comprehensive, portable advanced biofeedback electrical stimulation system designed for orthopaedic and neurological patients.

Why Saebo MyoTrac Infiniti?

What makes the **Saebo MyoTrac Infiniti** so unique is the advanced biofeedback triggered stimulation programs (EMG triggered stimulation and Reciprocal EMG triggered stimulation) along with the revolutionary foot drop treatment application. This all-in-one clinical solution provides a total body treatment like no other.

What is EMG Triggered Stimulation (ETS)?

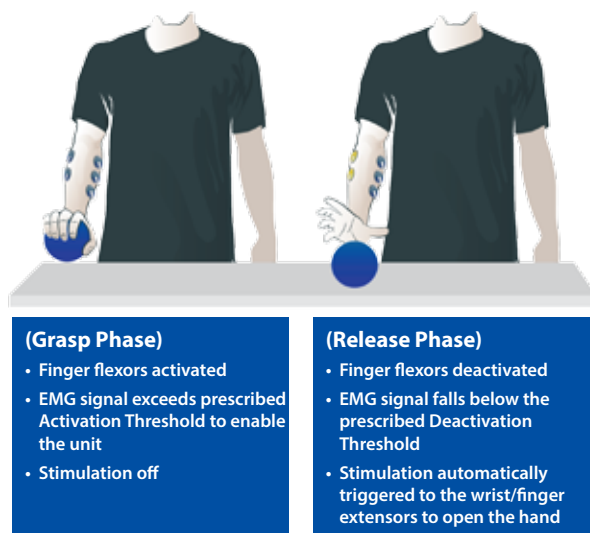
EMG Triggered Stimulation is the combination of biofeedback and stimulation. It is based on the client's own voluntary muscle activity or intentional movement. This "volitional" based application requires the client to actively participate (i.e., contract a muscle) in order to receive stimulation to the same area.

The clinician will set the prescribed threshold that the client must reach when activating his or her muscles. Once the client exceeds the preset level, he or she is rewarded with stimulation to the same muscles. Visual and auditory feedback allows the client to monitor progress. Through this cognitive relearning process, cortical plasticity can be achieved.

What is Reciprocal EMG Triggered Stimulation (RETS)?

Saebo is pleased to introduce the exciting new patent pending Reciprocal EMG Triggered Stimulation program. The RETS program is ideal for clients with increased tone that have difficulty relaxing or "shutting off" the spastic muscles. The biofeedback stimulation program involves both the agonist and antagonist muscles and is triggered upon relaxation of a muscle instead of activation.

Stimulation is triggered to the desired muscle group (i.e., finger extensors, elbow extensors etc.) once the client deactivates or relaxes the opposing hypertonic muscle group (i.e., spastic finger flexors, elbow flexors etc.). Therefore, the emphasis is placed on relaxing the hypertonic muscles in order for stimulation to be triggered to the opposing weakened muscle group.



Programs:

- Biofeedback
- Electrical Stimulation
- EMG Triggered Stimulation
- Reciprocal EMG Triggered Stimulation (RETS)
- Specialised Foot Drop Stimulation Program

Features:

- Includes 65 protocols
- Create custom programs
- Save biofeedback sessions
- Touch screen navigation
- Portable & user friendly
- Rechargeable battery



New Revolutionary Approach For Foot Drop Treatment

Patients suffering from foot drop can also benefit from Saebo's specialised biofeedback triggered stimulation technology. During the gait cycle, this unique foot drop stimulation system monitors the client's very own EMG signal and triggers the stimulation to the nerve and muscles allowing the foot to lift and clear during walking.

The natural triggered event provides constant cueing to the client and assists him or her with problem solving new movements based on the principles of motor relearning. This advanced remedial approach to foot drop treatment is a paradigm shift with emphasis placed on correcting and improving one's gait versus providing an adaptive compensatory triggered stimulation solution (heel switch or tilt sensor).

Code SBO-K3-SM-12-1

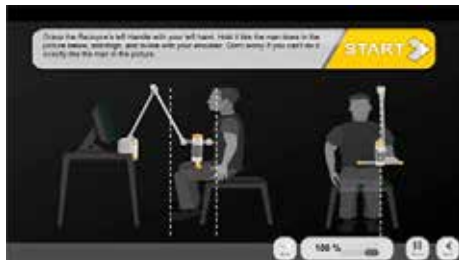
SaeboReJoyce

The **SaeboReJoyce** is an upper extremity rehabilitation workstation designed for orthopaedic and neurological patients that exhibit impaired function of the arm and hand. The computerised task oriented training system provides standardised upper limb exercises representing activities of daily living (ADL's). The **SaeboReJoyce** was designed to be used in the clinic and home-based settings.

Features:

- Practice repetitive gross motor and fine motor tasks with fun and motivating activities.
- Incorporate various grip and pinch prehension patterns.
- Track functional improvements over time with the **SaeboReJoyce** Arm Hand Function Test.
- Complete tasks in sitting, standing and lying positions.
- Incorporate all planes of movement.
- Task oriented games are customisable with individualised graded complexity.
- Save and print progress reports.
- Takes 5 minutes to setup, lightweight and easy to install.

Code SBO-K4-RJ-10-1



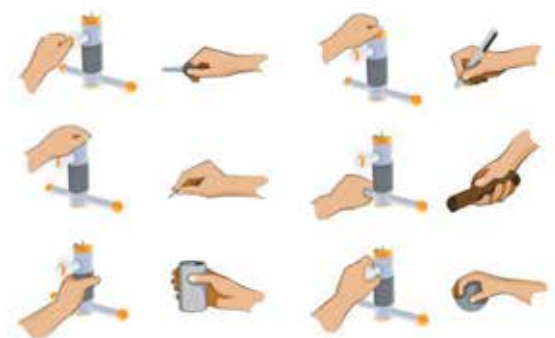
Arm Hand Function Test

The **SaeboReJoyce** includes a standardised objective upper limb test that correlates closely to the Action Research Arm Test (ARAT). It takes 5-10 minutes to administer and Assessment metrics are recorded and time-stamped with each test. Saebo software displays results graphically and data can be easily exported for analysis and documentation



Intensive Training with Saebo NeuroGaming™

Disguise repetitive task training with fun and motivating games. Saebo's computerised task oriented training system involves a range of activity-based games that will test speed, endurance, coordination, range of motion, strength, timing, and cognitive demand. The games are fully customisable to match the client's therapy needs.



Manipulandum for Dexterity Training Improve Hand Function

Simulate functional tasks such as opening a door or jar, grasping a cup or key, and manipulating coins or other small objects.

Example Grasp Patterns Include

- Cylindrical Grip
- Palmer Grasp
- Power Grip
- Key Pinch
- Spherical Grasp
- Tip-to-tip Pinch
- Tripod Grasp



Complete Upper Extremity Rehabilitation Workstation

The **SaeboReJoyce** includes a laptop with Saebo NeuroGaming Software™, power adaptor, USB connector, and a user manual.

SaeboVR

Virtual ADLs. Real-life simulated

The **SaeboVR** is a virtual ADL (activities of daily living) rehabilitation system. The proprietary platform was specifically designed to engage the client in both physical and cognitive challenges involving daily functional activities. In addition to interacting with meaningful every-day tasks, the **SaeboVR** uses a virtual assistant that appears on the screen to educate and facilitate performance by providing real-time feedback.

SaeboVR's ADL-focused virtual world provides clients with real-life challenges. Users will incorporate their impaired upper limb to perform simulated self-care tasks that involve picking up, transferring and manipulating virtual objects.



Code SBO-LXJ (TGA Approval Pending)

Sample Virtual ADL's:

- Grocery shopping
- Putting away groceries
- Preparing breakfast
- Pet shopping
- Pet bathing
- Garden planting
- Garden harvesting
- Preparing dinner
- Putting away clothes
- Volunteering at a soup kitchen



Features:

- All about function! Only virtual system available that focuses on real-life self-care tasks.
- Practice repetitive movements with fun and motivating activities.
- Activities are adaptable to the individual client to maximize success and outcomes.
- ADL tasks can be customized to challenge endurance, speed, range of motion, coordination, timing and cognitive demand.
- Includes a clinical provider dashboard to view client performance and participation trends.
- Reports are graphically displayed for easy viewing.



SaeboStep

Walk Smarter. Confidence and comfort is one step away.



What is the *SaeboStep*?

The *SaeboStep* consists of a lightweight, uniquely designed foot drop brace that provides convenience and comfort while offering optimum foot clearance and support during walking.

The *SaeboStep* was designed to replace uncomfortable, stiff, or bulky splints that go inside the shoe as well as poorly manufactured braces designed for outside of the shoe that lack support and durability.

Code SBO-S3-KT-10-SD-N-1



Why use the *SaeboStep*?

Lift: Strong durable spectra cord easily slips onto included eyelet attachments and lifts the foot quickly and easily.

Adjust: The revolutionary BOA dial technology allows individuals to quickly customize the lift angle required for safe foot clearance during walking.

Secure: Hook and loop Velcro strapping system secures the device to the ankle.

Release: Conveniently release tension at any given time during the day with the simple- to-use dial technology.

No Laces. No Problem.

The *SaeboStep* can even be worn comfortably with the majority of male or female shoe styles. Therefore, you are not limited to certain shoes. Individuals can use their favorite shoes by ordering the accessory kit to enable shoes without eyelets to be modified.

RESEARCH

Henry B. Hoffman^a, and Glyn L. Blakey^b. New design of dynamic orthoses for neurological conditions. *NeuroRehabilitation* 27 (2010) 1–7 1. DOI 10.3233/NRE20100632.

Butler A, Blanton S, Rowe V, Wolf S. Attempting to Improve Function and Quality of Life Using the FTM Protocol. *Journal of Neurologic Physical Therapy*: 30(3): 148-156, 2006.

Deering J, Terry K, Silver N, Amling L, Araniecke C, Barry J. Will Upper Extremity Performance Change Following Use of a Dynamic Orthosis Exercise Session in Individuals with Chronic Stroke?: A Pilot Study Maryville University, St. Louis, Missouri, 2009.

Farrell J, Hoffman H, Snyder, J, Giuliani C, Bohannon R. Orthotic Aided Training of the Paretic Upper Limb in Chronic Stroke: Results of a Phase 1 Trial. *NeuroRehabilitation*: 22: 99-103, 2007.

Franck J, Timmermans A, Seelen H. Effects of a Dynamic Hand Orthosis for Functional Use of the Impaired Upper Limb in Sub-Acute Stroke Patients: A Multiple Single Case Experimental Design Study. *Technology and Disability* 25: 177-187, 2013.

Gollega A. Innovative Technique to Improve Arm Function Following Acquired Brain Injury. Poster Presentation, 2012.

Heise K, Liuzzi G, Zimmerman M, Gerloff C, Hummel F. Intensive Orthosis-Based Home Training of the Upper Limb Leads to Pronounced Improvements in Patients in the Chronic Stage After Brain Lesions, 2010.

Jeon H, Woo Y, Yi C, Kwon O, Jung M, Lee Y, Hwang S, Choi B. Effect of Intensive Training With a Spring-Assisted Hand Orthosis on Movement Smoothness in Upper Extremity Following Stroke: A Pilot Clinical Trial. *Topics in Stroke Rehabilitation* 19(4): 320-328, 2012.

Krug G, Ebert A, Schmittgens J, Stanley H. The Effectiveness of Bilateral vs. Unilateral Task Retraining Using the SaeboFlex Orthosis in Individuals with Sub-Acute or Chronic Stroke. Department of Occupational Therapy and Occupational Science, University of Missouri, 2010.

McCombe Waller S, Whittall J. The Sequential Combination of Bilateral and Unilateral Arm Training to Promote Arm and Hand Function in Patients with More Severe Paresis. University of Maryland, School of Medicine, Department of Physical Therapy and Rehabilitation Science, Baltimore, Maryland, USA, 2008.

Rickards N, Sharma A, Prosser M. Feasibility Audit of SaeboFlex in Stroke Patients: Impact on Recovery Across the Patient Pathway. *Journal of the Association of Chartered Physiotherapists in Neurology*, 2015, Spring/Summer.

Stuck R, Marshall, L, Sivakumar R. SaeboFlex Upper Limb Training in Acute Stroke Rehabilitation. *International Journal of Stroke* 7(2): 20–1, 2012.

Woo Y, Jeon H, Hwang S, Choi B, Lee J. Kinematics Variations After Spring-Assisted Orthosis Training in Persons with Stroke. *Prosthetics and Orthotics International*, 2012.



www.performhealth.com.au
Tel: 1300 473 422



SaeboReach, SaeboFlex and SaeboStretch are registered trademarks of Saebo Inc. Charlotte, NC 28217, USA

SSA064(7)-07/17